

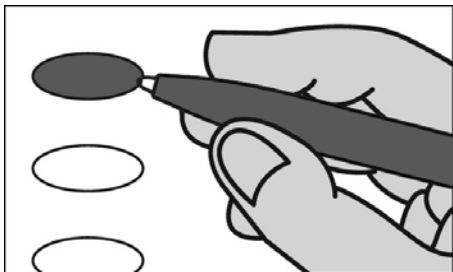
# Official Primary Ballot

Partisan Office  
August 11, 2026

S66

**Notice to Voters:** If you are voting on Election Day, your ballot must be initialed by two (2) election inspectors. If you are voting absentee, your ballot must be initialed by the municipal clerk or deputy clerk. Your ballot may not be counted without initials (see end of ballot for initials).

## General Instructions



If you make a mistake on your ballot or have a question, ask an election inspector for help (absentee voters: contact your municipal clerk).

To vote for a name on the ballot, fill in the oval next to the name like this: ●

To vote for a name that is not on the ballot, write the name on the line marked "write-in" and fill in the oval next to the name like this: ●

## Special Instructions for Voting in a Partisan Primary

In the Partisan Primary:

- You may vote in only ONE party's primary.
- If you choose a party, votes cast in that party will be counted. Votes cast in any other party will not be counted.
- If you do not choose a party, and you vote in more than one party, no votes will be counted.

**You must vote for individual candidates.**

## Party Preference Section

### Choose a party in which to vote

Fill in the oval next to your party choice, like this: ● Choose only ONE

- Republican
- Democratic
- Constitution
- Libertarian
- Wisconsin Green

## Republican Party Primary

*If you vote in this party's primary, you may not vote in any other party's primary.*

### Statewide

#### Governor Vote for 1

- Tom Tiffany
- Andy Manske
- write-in:

#### Lieutenant Governor Vote for 1

- David Varnam
- Will Martin
- write-in:

#### Attorney General Vote for 1

- Eric Toney
- write-in:

#### Secretary of State Vote for 1

- Jay Schroeder
- Brayden Myer
- Nate Pollnow
- Cindy Werner
- write-in:

#### State Treasurer Vote for 1

- John S. Leiber
- write-in:

### Congressional

#### Representative in Congress District 2 Vote for 1

- write-in:

### Legislative

#### State Senator District 15 Vote for 1

- Scott Fleming
- write-in:

#### Representative to the Assembly District 45 Vote for 1

- Jocelyn Jordan
- write-in:

### County

#### Sheriff Vote for 1

- write-in:

#### Clerk of Circuit Court Vote for 1

- write-in:

#### End Republican Party Primary

## Democratic Party Primary

*If you vote in this party's primary, you may not vote in any other party's primary.*

### Statewide

#### Governor Vote for 1

- David Crowley
- Sara Rodriguez
- Joel Brennan

#### Lieutenant Governor Vote for 1

- Francesca Hong
- Kelda Roys
- Missy Hughes
- Mandela Barnes
- write-in:

#### Lieutenant Governor Vote for 1

- Sarah Godlewski
- write-in:

#### Attorney General Vote for 1

- Josh Kaul
- write-in:

#### Secretary of State Vote for 1

- JoCasta Zamarripa
- write-in:

#### State Treasurer Vote for 1

- Yee Leng Xiong
- Dylan Ray Helmenstine
- write-in:

### Congressional

#### Representative in Congress District 2 Vote for 1

- Douglas Alexander
- Mark Pocan
- write-in:

### Legislative

#### State Senator District 15 Vote for 1

- Mark Spreitzer
- write-in:

#### Representative to the Assembly District 45 Vote for 1

- Clinton Anderson
- write-in:

### County

#### Sheriff Vote for 1

- Curtis Fell
- write-in:

#### Clerk of Circuit Court Vote for 1

- Amanda Nelson
- write-in:

#### End Democratic Party Primary

Republican Party Primary begins at top of next column.

Democratic Party Primary begins at top of next column.

Constitution Party Primary begins on back of ballot.

Constitution Party Primary	
<i>If you vote in this party's primary, you may not vote in any other party's primary.</i>	
Statewide	
<b>Governor Vote for 1</b>	
<input type="radio"/> write-in:	
<b>Lieutenant Governor Vote for 1</b>	
<input type="radio"/> write-in:	
<b>Attorney General Vote for 1</b>	
<input type="radio"/> write-in:	
<b>Secretary of State Vote for 1</b>	
<input type="radio"/> write-in:	
<b>State Treasurer Vote for 1</b>	
<input type="radio"/> write-in:	
Congressional	
<b>Representative in Congress District 2 Vote for 1</b>	
<input type="radio"/> write-in:	
Legislative	
<b>State Senator District 15 Vote for 1</b>	
<input type="radio"/> write-in:	
<b>Representative to the Assembly District 45 Vote for 1</b>	
<input type="radio"/> write-in:	
County	
<b>Sheriff Vote for 1</b>	
<input type="radio"/> write-in:	
<b>Clerk of Circuit Court Vote for 1</b>	
<input type="radio"/> write-in:	
<b> End Constitution Party Primary</b>	
Libertarian Party Primary begins at top of next column.	

Libertarian Party Primary	
<i>If you vote in this party's primary, you may not vote in any other party's primary.</i>	
Statewide	
<b>Governor Vote for 1</b>	
<input type="radio"/> write-in:	
<b>Lieutenant Governor Vote for 1</b>	
<input type="radio"/> write-in:	
<b>Attorney General Vote for 1</b>	
<input type="radio"/> write-in:	
<b>Secretary of State Vote for 1</b>	
<input type="radio"/> write-in:	
<b>State Treasurer Vote for 1</b>	
<input type="radio"/> write-in:	
Congressional	
<b>Representative in Congress District 2 Vote for 1</b>	
<input type="radio"/> write-in:	
Legislative	
<b>State Senator District 15 Vote for 1</b>	
<input type="radio"/> write-in:	
<b>Representative to the Assembly District 45 Vote for 1</b>	
<input type="radio"/> write-in:	
County	
<b>Sheriff Vote for 1</b>	
<input type="radio"/> write-in:	
<b>Clerk of Circuit Court Vote for 1</b>	
<input type="radio"/> write-in:	
<b> End Libertarian Party Primary</b>	
Wisconsin Green Party Primary begins at top of next column.	

Wisconsin Green Party Primary	
<i>If you vote in this party's primary, you may not vote in any other party's primary.</i>	
Statewide	
<b>Governor Vote for 1</b>	
<input type="radio"/> write-in:	
<b>Lieutenant Governor Vote for 1</b>	
<input type="radio"/> write-in:	
<b>Attorney General Vote for 1</b>	
<input type="radio"/> write-in:	
<b>Secretary of State Vote for 1</b>	
<input type="radio"/> Pete Karas	
<input type="radio"/> write-in:	
<b>State Treasurer Vote for 1</b>	
<input type="radio"/> write-in:	
Congressional	
<b>Representative in Congress District 2 Vote for 1</b>	
<input type="radio"/> write-in:	
Legislative	
<b>State Senator District 15 Vote for 1</b>	
<input type="radio"/> write-in:	
<b>Representative to the Assembly District 45 Vote for 1</b>	
<input type="radio"/> write-in:	
County	
<b>Sheriff Vote for 1</b>	
<input type="radio"/> write-in:	
<b>Clerk of Circuit Court Vote for 1</b>	
<input type="radio"/> write-in:	
<b> End Wisconsin Green Party Primary</b>	

Official Primary Ballot  
Partisan Office  
August 11, 2026  
for

City of  
Evansville

Ballot issued by  
\_\_\_\_\_  
Initials of election inspectors

Absentee ballot issued by  
\_\_\_\_\_  
Initials of Municipal Clerk or Deputy Clerk

**Certification of Voter Assistance**  
I certify that I marked or read aloud this ballot at the request and direction of a voter who is authorized under Wis. Stat. §6.82 to receive assistance.  
\_\_\_\_\_  
Signature of assistor

**For Official Use Only**

**Inspectors:** Identify ballots required to be remade:

Overvoted  
 Damaged  
 Other

If this is the **Original Ballot**, write the serial number here: \_\_\_\_\_

If this is the **Duplicate Ballot**, write the serial number here: \_\_\_\_\_

\_\_\_\_\_  
Initials of inspectors who remade ballot